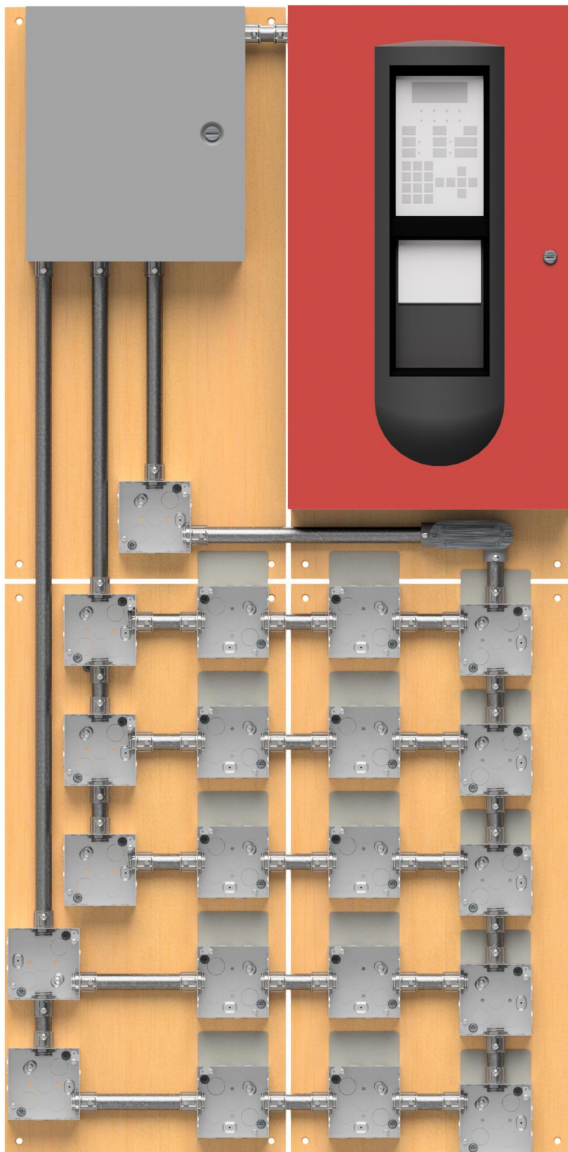


# Addressable Fire Alarm Learning System 583747 (46103-BA)

**FESTO**

LabVolt Series

Datasheet



## Table of Contents

General Description _____	2
Features & Benefits _____	2
List of Equipment _____	2
List of Manuals _____	2
Table of Contents of the Manual(s) _____	3
Optional Equipment _____	3
System Specifications _____	3
Equipment Description _____	3
Optional Equipment Description _____	4

## General Description

### Teach the fundamentals of addressable fire alarm systems in a compact workspace

This system is designed to learn the necessary skills to install and wire initiating devices and notification appliances as well as program an addressable fire alarm control panel.

Fire alarm systems utilizing modern technology and employing good engineering practice in the application of codes and standards greatly increase the chances of limiting fire propagation and saving lives.

Addressable fire alarm systems are commonly used in large buildings such as campuses or commercial premises spread over a wide area.

The Addressable Fire Alarm Learning System allows students to learn how to install, wire and test a complete circuit including notification appliances and initiating devices with the same components and tools they would use in their daily job. They also program the fire alarm control panel with the provided software. The system is like a real installation, but in a much smaller form factor, allowing multiple systems to be installed in rooms with limited space.

The manual guides the students step-by-step during their learning process with several photos and illustrations.

## Features & Benefits

- Commercial-grade equipment for a realistic learning experience
- Very compact system, ideal for rooms with limited space
- System can be fixed to a wall or to an optional double-sided mobile workstation
- Control panel connections made through an auxiliary panel to protect the integrity of the FACP

## List of Equipment

Qty	Description	Model number
1	Fire Alarm Parts (Addressable) for the Fire Alarm Training System _____	8095743
1	Control Panel for the Fire Alarm Training System _____	590011 (85213-0A)

## List of Manuals

Description	Manual number
Addressable Fire Alarm System (Job Sheets - Student) _____	8093121
Addressable Fire Alarm System (Job Sheets - Instructor) _____	8093123

## Table of Contents of the Manual(s)

### Addressable Fire Alarm System (Job Sheets - Student) (8093121)

- 1 Detection Circuit – Class B
- 2 Detection Circuit with T-taps – Class B
- 3 Detection Circuit Using Input Module – Class B
- 4 Detection and Annunciator Circuits – Class B
- 5 Detection and Annunciator Circuits Using an Audible Detector Base – Class B
- 6 Detection Circuit – Class A
- 7 Detection and Annunciator Circuits – Class A
- 8 Detection Circuit Using Isolator Modules – Class A
- 9 Ancillary Equipment Controlled by the Fire Alarm Control Panel

### Addressable Fire Alarm System (Job Sheets - Instructor) (8093123)

- 1 Detection Circuit – Class B
- 2 Detection Circuit with T taps – Class B
- 3 Detection Circuit Using Input Module – Class B
- 4 Detection and Annunciator Circuits – Class B
- 5 Detection and Annunciator Circuits Using an Audible Detector Base – Class B
- 6 Detection Circuit – Class A
- 7 Detection and Annunciator Circuits – Class A
- 8 Detection Circuit Using Isolator Modules – Class A
- 9 Ancillary Equipment Controlled by the Fire Alarm Control Panel

## Optional Equipment

Qty	Description	Model number
1	Fixture Kit _____	583234 (39574-00)
1	Mobile Workstation, Fire Alarm _____	580035 (46801-B0)
1	Campus Licence for Fire Alarm Training Systems _____	8096376 (80963-76)

## System Specifications

Parameter	Value
<b>Physical Characteristics</b>	
Required Floor Space (H x W x D)	On Casters, 2135 x 1010 x 800 mm (84 x 39.8 x 31.5 in)

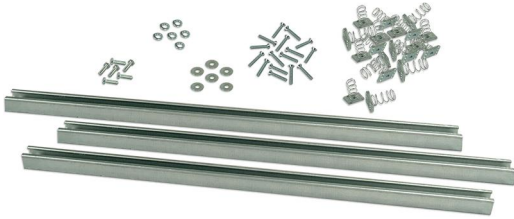
## Equipment Description

### Control Panel for the Fire Alarm Training System 590011 (85213-0A)

The Control Panel for the Fire Alarm Add-On Training System is a control panel of the addressable type for the Fire Alarm Training System. It provides one Class-A or Class-B addressable loop, two Class-A or Class-B output circuits, and a 30-LED annunciator panel.

## Optional Equipment Description

### Fixture Kit (Optional) 583234 (39574-00)

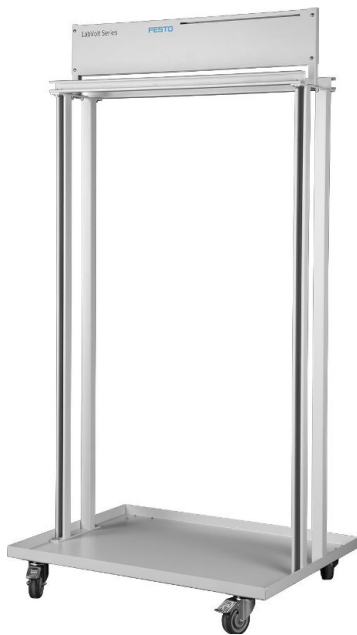


The Fixture Kit includes all accessories required to fix the components of the Fire Alarm Training Systems, Models 46103-A and 46103-B to the optional Mobile Workstation.

### Specifications

Parameter	Value
Parts	Flat and lock washers, screws, struts, and spring nuts

### Mobile Workstation, Fire Alarm (Optional) 580035 (46801-B0)



The Mobile Workstation is a versatile bench where two student groups can work at the same time. It is constructed from heavy-duty metal struts and painted using powder-coated paint for a durable surface. The unit is mounted on swivelling casters with a lock mechanism to allow easy motion as well as stable operation. The Fixture Kit (ordered separately), Model 39574, is required to fix the components on the Mobile Workstation. One Fixture Kit is required for each system.

### Specifications

Parameter	Value
<b>Physical Characteristics</b>	
Dimensions (H x W x D)	1830 x 1010 x 800 mm (72 x 39.8 x 31.5 in)

### Campus Licence for Fire Alarm Training Systems (Optional) 8096376 (80963-76)

The Campus License includes electronic and printed versions of the student and instructor manuals. The campus license grants modification and reproduction rights within the purchasing institution.

## List of Manuals

Description	Manual number
Conventional Fire Alarm System (Work Orders - Student)	8093091
Conventional Fire Alarm System (Work Orders - Student)	8093092
Conventional Fire Alarm System (Work Orders - Instructor)	8093093
Conventional Fire Alarm System (Work Orders - Instructor)	8093094
Addressable Fire Alarm System (Job Sheets - Student)	8093121
Addressable Fire Alarm System (Job Sheets - Student)	8093122
Addressable Fire Alarm System (Job Sheets - Instructor)	8093123
Addressable Fire Alarm System (Job Sheets - Instructor)	8093125

## Table of Contents of the Manual(s)

### Conventional Fire Alarm System (Work Orders - Student) (8093091)

- 1 Schematic Diagram and Wiring (1)
- 2 Schematic Diagram and Wiring (2)
- 3 Component Installation
- 4 Schematic Diagram, Wiring, and Programming (1)
- 5 Schematic Diagram, Wiring, and Programming (2)
- 6 Schematic Diagram, Wiring, and Programming (3)
- 7 Schematic Diagram, Wiring, and Programming (4)
- 8 Schematic Diagram, Wiring, and Programming (5)
- 9 Schematic Diagram, Wiring, and Programming (6)
- 10 Schematic Diagram, Wiring, and Programming (7)
- 11 Schematic Diagram, Wiring, and Programming (8)
- 12 Schematic Diagram, Wiring, and Programming (9)

### Conventional Fire Alarm System (Work Orders - Instructor) (8093093)

- 1 Schematic Diagram and Wiring (1)
- 2 Schematic Diagram and Wiring (2)
- 3 Component Installation
- 4 Schematic Diagram, Wiring, and Programming (1)
- 5 Schematic Diagram, Wiring, and Programming (2)
- 6 Schematic Diagram, Wiring, and Programming (3)
- 7 Schematic Diagram, Wiring, and Programming (4)
- 8 Schematic Diagram, Wiring, and Programming (5)
- 9 Schematic Diagram, Wiring, and Programming (6)
- 10 Schematic Diagram, Wiring, and Programming (7)
- 11 Schematic Diagram, Wiring, and Programming (8)
- 12 Schematic Diagram, Wiring, and Programming (9)

### Addressable Fire Alarm System (Job Sheets - Student) (8093121)

- 1 Detection Circuit – Class B
- 2 Detection Circuit with T-taps – Class B
- 3 Detection Circuit Using Input Module – Class B
- 4 Detection and Annunciator Circuits – Class B
- 5 Detection and Annunciator Circuits Using an Audible Detector Base – Class B

- 6 Detection Circuit – Class A
- 7 Detection and Annunciator Circuits – Class A
- 8 Detection Circuit Using Isolator Modules – Class A
- 9 Ancillary Equipment Controlled by the Fire Alarm Control Panel

**Addressable Fire Alarm System (Job Sheets - Instructor) (8093123)**

- 1 Detection Circuit – Class B
- 2 Detection Circuit with T taps – Class B
- 3 Detection Circuit Using Input Module – Class B
- 4 Detection and Annunciator Circuits – Class B
- 5 Detection and Annunciator Circuits Using an Audible Detector Base – Class B
- 6 Detection Circuit – Class A
- 7 Detection and Annunciator Circuits – Class A
- 8 Detection Circuit Using Isolator Modules – Class A
- 9 Ancillary Equipment Controlled by the Fire Alarm Control Panel

Reflecting the commitment of Festo Didactic to high quality standards in product, design, development, production, installation, and service, our manufacturing and distribution facility has received the ISO 9001 certification.

Festo Didactic reserves the right to make product improvements at any time and without notice and is not responsible for typographical errors. Festo Didactic recognizes all product names used herein as trademarks or registered trademarks of their respective holders. © Festo Didactic Inc. 2020. All rights reserved.

**Festo Didactic SE**

Rechbergstrasse 3  
73770 Denkendorf  
Germany

P. +49(0)711/3467-0  
F. +49(0)711/347-54-88500

**Festo Didactic Inc.**

607 Industrial Way West  
Eatontown, NJ 07724  
United States

P. +1-732-938-2000  
F. +1-732-774-8573

**Festo Didactic Ltée/Ltd**

675 rue du Carbone  
Québec QC G2N 2K7  
Canada

P. +1-418-849-1000  
F. +1-418-849-1666

[www.labvolt.com](http://www.labvolt.com)

[www.festo-didactic.com](http://www.festo-didactic.com)