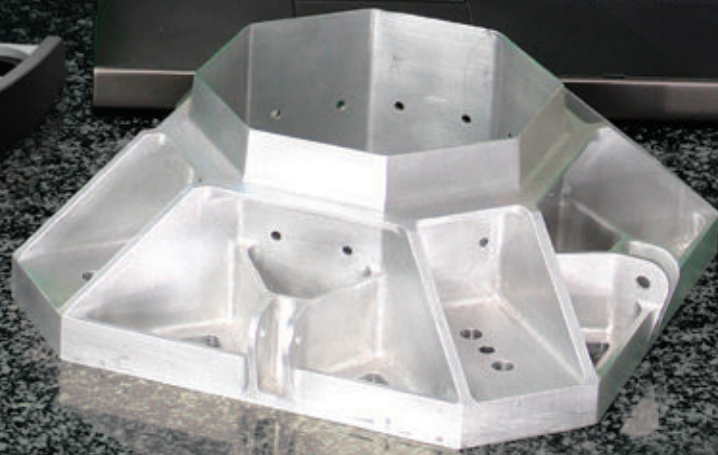
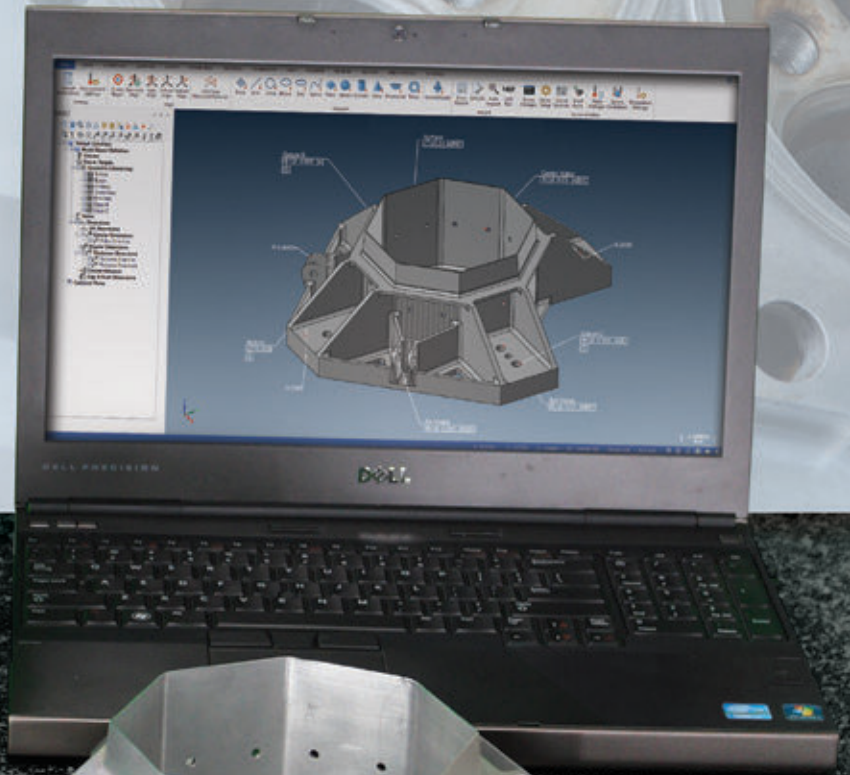


# Master3DGage™

AFFORDABLE, PORTABLE CMM



Automated Inspection & Reporting  
3D Scanning and Reverse Engineering

**POWERED BY  
VERISURF.**

# Reduce Scrap, Improve Quality, and Increase Productivity

The flexibility of Master3DGage™ makes it ideal for inspection and reverse engineering. The multi-axis CMM arm features absolute encoders for quick start-up and ultra-high precision measurements while its highly articulated wrist enables you to measure hard to access surfaces by reaching

around and under parts. The lightweight, wireless design makes it easy to place the Master3DGage right into your CNC machine while the magnetic base locks it into place on the machine bed to quickly inspect parts while maintaining critical part to machine alignment. Optional 3D scanner

and hot swappable probes with automatic probe recognition make it easy to change from scanning a complex profile to probing a small feature in seconds. Implementing Master3DGage in-process inspection identifies out-of-tolerance conditions sooner enabling immediate corrective action.



Quick start absolute encoders

Multi-axis CMM arm with 1.2 m (4 ft) measuring volume

Low CTE carbon fiber tubing

Hot swap between probes (3 included) and optional scanner

Counterweight balancing

Rechargeable lithium-ion battery

Wireless communication (WiFi)

Stable freestanding measuring base included

Portable & lightweight

## POWERED BY VERISURF.

The Master3DGage is powered by Verisurf Software, which is available in Solution Suites to configure the right functionality for your application and budget.



Includes three hot-swappable probes with automatic recognition for flexibility and efficiency: 3mm ruby; 6mm ruby; 15mm steel spherical.



Optional non-contact laser scanner is interchangeable with tactile probes on the Master3DGage. This expands application flexibility between contact probing used in many inspection processes and high-speed non-contact 3D scanning, typically used in reverse engineering.



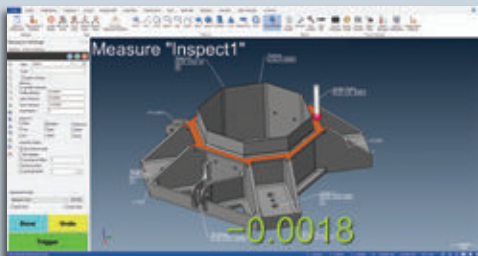
## Inspection and Reporting in Minutes



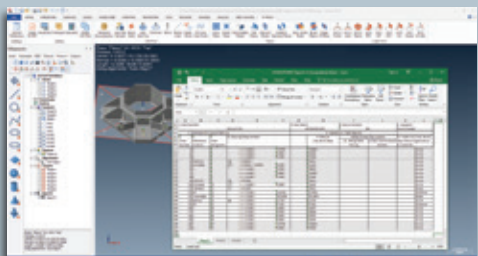
First article inspections that used to take hours now take just minutes using three easy steps.



Align Part to CAD Model



Inspect Part to CAD Datums

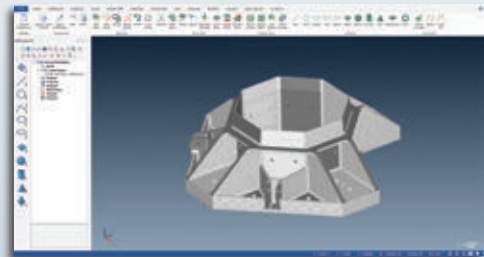


Report Part Deviations Compared to Nominal CAD

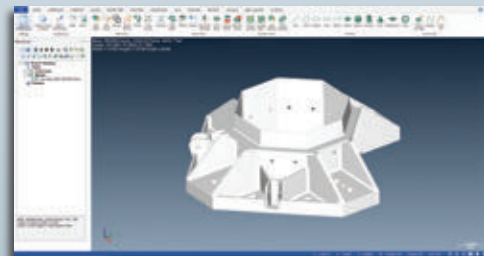
## Scanning and Reverse Engineering



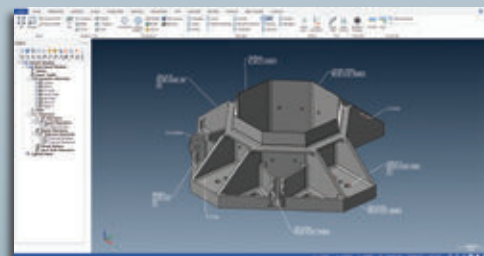
Software productivity features make scanning and reverse engineering fast and easy.



Scan Measurements to Point Cloud



Mesh Watertight Geometry



Model Intelligent 3D CAD

# Hardware Specifications

## PCMM Standard System

### Portable measuring arm

- Master3DGage™ articulated arm PCMM
- 6-Axis 1.2m (4 ft.)
- Ergonomic counterweight design
- USB and power cables, Universal worldwide voltage 110V-240V, CE compliant
- Quick setup guide and mouse pad
- Calibration certificate
- Internal lithium-ion battery and WiFi
- Anodized aluminum training part
- Rugged, three-handle, wheeled transport case
- 1-year hardware warranty

### NIST traceable length bar

Certified length standard, 305mm (12 in.) with ISO 17025 certificate

### Standard probes

- 3mm ruby, 6mm ruby, 15mm steel spherical hard probes (including case)
- Quick disconnect, hot swappable with automatic probe identification

### Certified qualification sphere

- Size  $\pm 0.0005\text{mm}$  (0.00002 in.)
- Spherical within 0.0001mm (0.000005 in.)



Certified length standard



Master3DGage™ training part

not to scale



Standard probes

## PCMM Specifications

### Calibration Specifications

Certified to ISO 10360-2 and 12 specifications

### Probing volumetric accuracy

$\pm 0.025\text{mm}$  (.00098 in.)

### Probing point repeatability

0.014mm (.00055 in.)

### Measuring volume

1.2m (4 ft.) with absolute encoders

### Weight (system with transit case)

12.0 kg/26.45 lb. (35.3 kg/77.82 lb.)

### Universal power supply

110-240 VAC, 50/60 Hz

### Operating temperature

+5° to +40°C (39° F to 104°F)

### Storage temperature

-30° C to 70° C (-22° F to 158° F)

### Relative humidity

10% to 90% non-condensing

### Transit case size

30.5 x 53.3 x 96.5cm (12 x 21 x 38 in.)



Transit Case

# Hardware Options

## PCMM Options

### Short probe kit



### Long probe kit

### Custom probes

### Magnetic base kit

3 precision ground magnetic blocks with mounting hardware



### Threaded stand adapter

### 1, 2 & 3-year extended warranties

## Laser Scanner Option

### 3D laser scanner

### Scanner cable

### Calibration sphere

### Rugged transport case



## Laser Scanner Specifications

Accuracy	$\pm 40\mu\text{m}$ 2 sigma
Point acquisition rate	45,000 points/second
Points per line	750 @60Hz
Line rate	60Hz
Line width (mid-field)	80mm (3.1 in.)
Stand-off distance	135mm $\pm 45\text{mm}$ (5.3in. $\pm 1.8$ )
Minimum point spacing	0.08mm (.0031 in.)
Laser power adjustment	Semi-automatic
Probe/Scanner Mount	Hot swappable
Weight	0.32 kg (.70 lb.)

# Software Specifications

## Verisurf Software

Coordinate Metrology Software

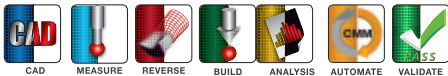
NIST Tested

PTB Certified

Windows 7, 8 and 10 Operating Systems

## Verisurf Software Flexibility

Verisurf software modules are available in Solution Suite configurations to deliver the right functionality for your application and budget.



## Standard File Formats

**Native CAD:** Mastercam, SolidWorks, AutoCAD, Inventor, SpaceClaim, Solid Edge, Rhino 3D, KeyCreator, Cadkey, Alibre

**Neutral CAD:** STL, STEP, IGES, ACIS, Parasolid, VDA, HPGL

## Optional File Formats

**Native CAD:** Native CAD: CATIA V4, V5, V6, PTC Creo, Siemens UG/NX

**REVERSE Module:** OBJ, PLY, Collada, ASCII, XYZ Cloud, XYZRGB Cloud

## Report Formats

3D PDF, Excel, PowerPoint, Word, HTML, Text, Database

**Master3DGage™**  
AFFORDABLE, PORTABLE CMM

**Schedule a Demo Today**

See a Master3DGage™ powered by Verisurf or to help configure and quote your ideal system.

[www.verisurf.com/request-a-quote](http://www.verisurf.com/request-a-quote)



Visit our YouTube channel

[www.youtube.com/user/verisurfchannel](http://www.youtube.com/user/verisurfchannel)

Verisurf Authorized Distributor

**VERISURF®**  
3D Measurement Solutions

4907 East Landon Drive, Anaheim, CA 92807  
P 888.713.7201 • [www.verisurf.com/hardware/m3dg](http://www.verisurf.com/hardware/m3dg)

© 2019 Verisurf Software, Inc.