

WELDING SIMULATOR

WELDTRAINER

COMPACT VERSION

WELDTRAINER IN A NEW COMPACT, VERSATILE AND PORTABLE FORMAT



WELDTRAINER

WELDTRAINER NEW COMPACT VERSION READY FOR ORDERS



SUMMARY

The Weldtrainer family grows with a new compact version now available.

This new version offers the very same features and every advantage the standard Weldtrainer is well known for but in a totally new format meant to be used on top of a table with great versatility thanks to its sophisticated design.

Now it does not matter how tiny the available space and not a problem if it is occupied by mandatory tables, WeldTrainer compact is designed to adapt to any scenario and user preference, offering many different placement options to always fit the available space in the best possible way.

(Table not included)

KEY FEATURES



- Same software and features of the standard Weldtrainer.
- Same precision, effectiveness, accessibility but with vastly increased versatility.
- Custom hardware design featuring unmatched possibilities and placement options.
- Integrates the same best in world electromagnetic spatial tracking technology.
- Fast and smooth interaction with the hardware for every supported feature.
- Multiple installation options with every configuration supported out of the box.
 - Very easy to assembly and disassembly.
 - Very easy to reallocate.
- Sophisticated and awesome looking design.

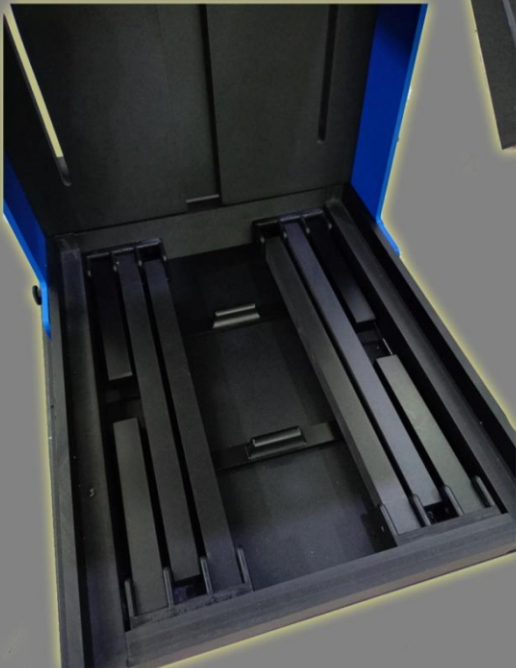
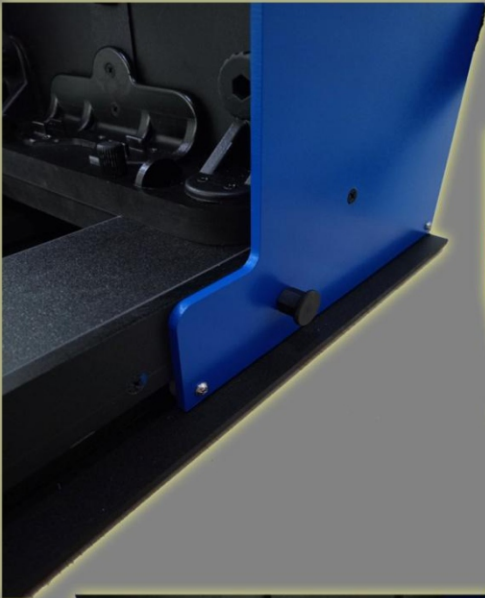
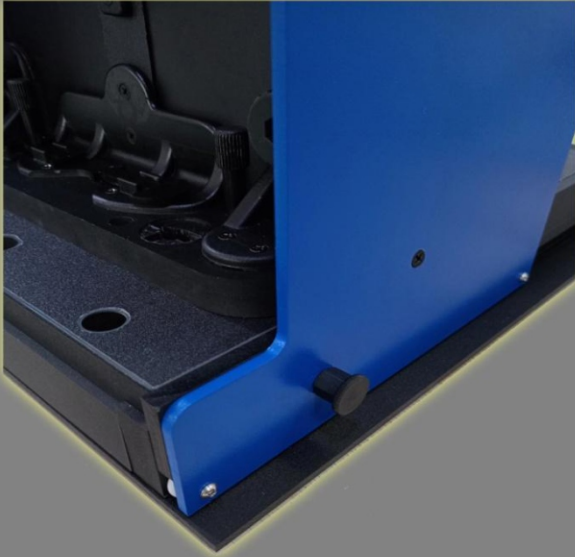
EVERY WELDING POSITION SUPPORTED IN A 40x52 CM AREA



SOPHISTICATED DESIGN WITH ADVANCED CABLES MANAGEMENT



SOPHISTICATED DESIGN WITH ADVANCED CABLES MANAGEMENT



MULTIPLE INSTALL OPTIONS AVAILABLE OUT OF THE BOX



MULTIPLE INSTALL OPTIONS AVAILABLE OUT OF THE BOX



WHAT IS IN THE BOX



1: Main chassis with all computer elements inside plus TIG and hose base holders.

2: TIG pedal.

3: Auxiliary table (short mode, default wheeled mode , short extended mode and default wheeled extended mode available) plus 14 individual workpieces.

4: Four welding torches (SMAW, GMAW, TIG, FCAW) plus four individual stands.

5: Laptop with instructor position software.

6: External monitor.

7: Infrared dual camera plus rod with holders and workpieces coupling parts.

8: Main hose with base for torches connection including magnetic sensor inside.

9: Custom helmet with audio visual system inside plus infrared reflectors.

10: Worktable made of 2 individual parts.

11: TIG filler rod including magnetic sensor inside.

12: Electromagnetic field source emitter.

13: Three different helper extension trays.

(table not included)

DIMENSIONS AND WEIGHTS

110 - 154 cm

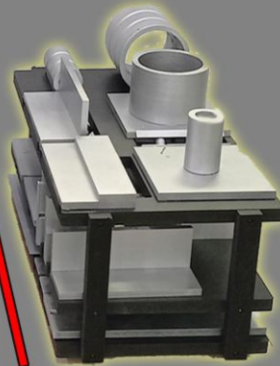


12 Kgr

52 cm

40 cm

12 - 18 Kgr



64 cm

35 - 69 cm

30 cm



28 cm

37 cm

10 Kgr

40 cm



74 cm

106 cm

63 cm

65 Kgr

