



**Epilog**Laser



MADE IN USA

EPILOGLASER.COM

# OVER 30 YEARS OF EXPERIENCE

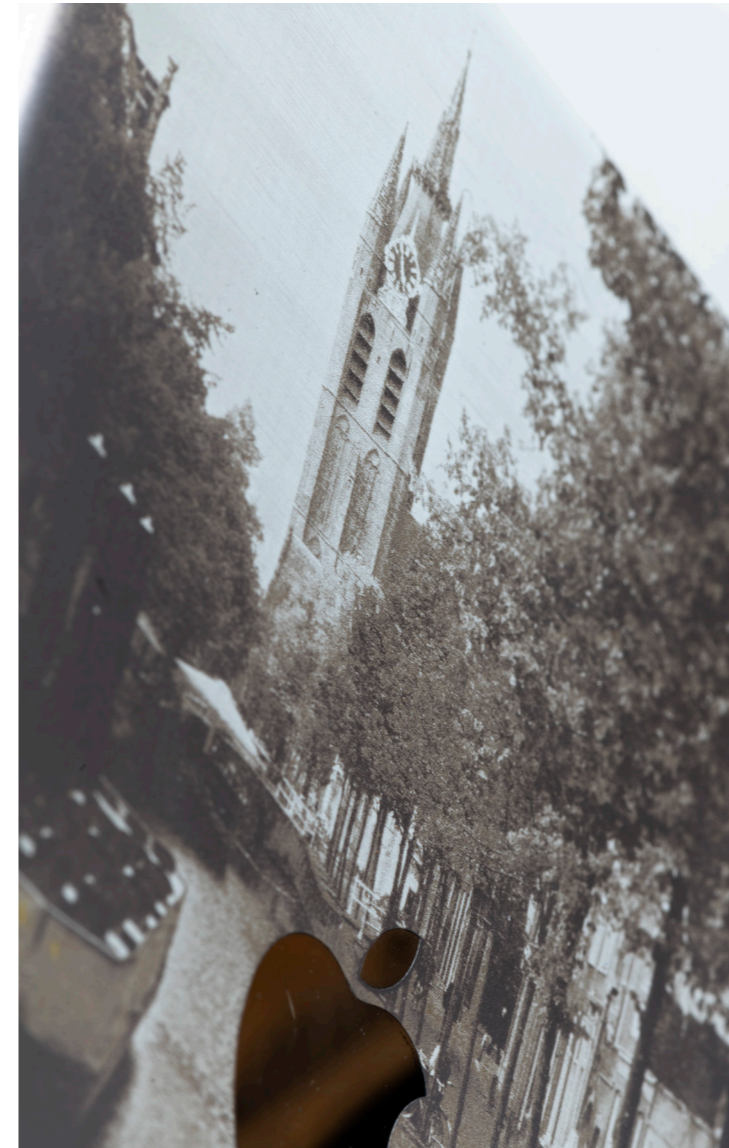
---



In 1988, Epilog Laser's revolutionary systems opened the world's eyes, not only to what could be accomplished with a laser, but also to how accessible a laser is to businesses, both large and small.

We are innovators. We are engineers. We are problem solvers. We are committed to designing and manufacturing the highest-quality laser systems, right here from our global headquarters in Golden, CO, in the foothills of the Rocky Mountains.

We've been in the laser business longer than anyone else and it shows. Set up a hands-on demonstration and see how an Epilog Laser can improve your business with the industry's highest engraving speeds, the most-detailed etching, and fast, accurate cutting. Find out how a laser can transform your business.





# IMAGINE - DESIGN - CREATE

Electronics Engraving  
Wood Engraving & Cutting  
Marble & Stone Etching  
Acrylic & Wood Signage  
Nameplates & Desk sets  
Wedding Memorabilia  
Corporate Giveaways  
Glass Etching  
Sporting Goods

Holiday Ornaments  
Corporate & Sporting Awards  
Architectural Models  
One-of-a-Kind Gifts  
Greeting Cards  
Guitar Inlays  
Custom Jewelry  
Acrylic Plaques  
Photo Frames

3D Models  
Inlaid Signage  
Photo Engraving  
Barcode Engraving  
Engraved Denim Jeans  
Logo Engraving on Parts  
Etched Business Cards  
Tool Identification  
Medical Part Marking

Laptop Customization  
Paper Invitations  
Marble Flooring  
Cloth Etching  
Memorials  
Home Decor  
Cabinetry  
Product Marking  
Industrial Etching

Phone Customization  
Custom Pet Tags  
Appliqués  
Toys & Games  
Photo Albums  
Wine Bottle Etching  
Engraved Mirrors  
Photo Etching  
And much more!

# ACCESSORIES

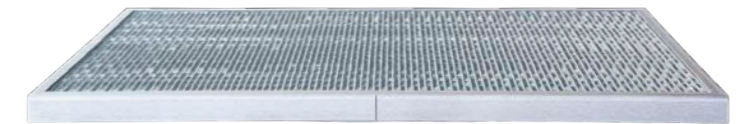
## Air Compressor

Epilog's optional Air Compressor is available to work with the included Air Assist feature of the laser systems. Direct a constant stream of air to your cutting surface to remove heat and combustible gases from the work area. This high-quality air compressor unit feeds 30 psi (2.07 bar) of air through the Air Assist structure, giving you the best cutting results available. The rubber, vibration-dampening feet reduce the noise level of the compressor.



## Cutting Table

Incorporate the gridded cutting table when cutting through materials. By raising the materials off the table when cutting you'll be able to reduce any back-side burning on the material.



## Pin Table

The Pin Table incorporates moveable pins designed to raise and support the areas of a piece of material that won't be cut. This helps ensure you receive the cleanest laser cut edges from your laser machine.



## Rotary Attachments

Epilog offers two types of Rotary Attachments. The Standard Rotary is great for general-purpose cylindrical shapes, including glasses, mugs and wine bottles. We offer the 3-Jaw Chuck Rotary Attachment for more demanding applications when you need to mechanically clamp a cylinder or oddly shaped, non-cylindrical item.



# CHOOSE YOUR LASER

## CO<sub>2</sub>

Engrave and cut a wide variety of materials with our CO<sub>2</sub> laser line. A CO<sub>2</sub> laser system can engrave on all kinds of materials, including wood, acrylic, rubber, plastic, and more.

	Engrave	Cut
Wood	•	•
Acrylic	•	•
Glass	•	
Coated metals	•	
Ceramics	•	
Delrin	•	•
Cloth	•	•
Leather	•	•
Marble	•	
Matboard	•	•
Melamine	•	•
Paper	•	•
Mylar	•	•
Pressboard	•	•
Rubber	•	•
Wood veneer	•	•
Fiberglass	•	•
Painted metals	•	
Tile	•	
Plastic	•	•
Cork	•	•
Corian	•	•
Anodized aluminum	•	
Twill	•	•
Stainless steel	‡	
Brass	‡	
Titanium	‡	
Bare metal	‡	

‡ CO<sub>2</sub> lasers will mark bare metals when coated with a metal marking solution. For more info, call +1 303-277-1188.

## Fiber

Featuring an air-cooled ytterbium fiber laser source, these are the ideal systems for direct metal etching and marking, as well as marking engineered plastics.

Compatible Materials:

ABS (black/white)	Nickel-plated 1215 mild steel
Aluminum 6061	Nickel-plated brass
Aluminum, yellow chromate	Nickel-plated gold
Anodized aluminum	Nickel-plated Kovar
Bayers bayblend FR110	Nickel-plated steel
Brass	Nylon
Brushed aluminum	PEEK, white & glass filled
Carbon fiber	Polybutylene Terephthalate
Carbon nanotube	Polycarbonate, (black/white)
Ceramics	Polycarbonate resin 121-R
Ceramics, metal-plated	Polysulfone
Cobalt chrome steel	Rynite PET
Copper	Santoprene
DAP- Diallyl Phthalate	Silicon carbide
Delrin, colored (black/brown)	Silicon steel
GE Plastics polycarbonate resin	Silicon wafers
Hard coat anodized aluminum	Stainless steel 303
Inconel metals (various)	Stainless steel 17-4 PH
Iron-phosphate coating	Steel 4043
Machine tool steel	Steel, machine tool
Magnesium	Teflon, glass filled
Makrolon	Various inconel metals
Makrolon 2807	Zinc plated mild steel
Molybdenum	And many more!

# EASY PROJECT SETUP

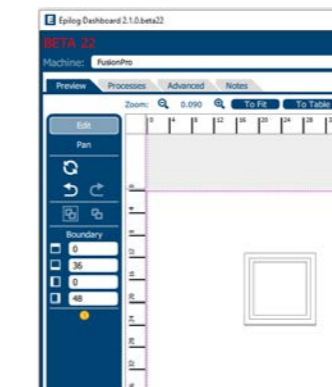
## Network

All Epilog Laser systems are network devices with both Ethernet and USB connections. The new Fusion Pro also allows you to print wirelessly to the laser system. With true Ethernet connectivity, you have the most reliable and quick data transfer available with the ability to network multiple computers to a single system or multiple lasers to a single computer.

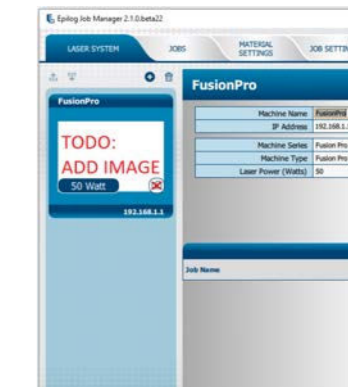
## Software



CorelDRAW, AutoCAD, Illustrator, Inkscape, Photoshop, and many other programs can all be used to create your design and print it directly to the laser.



The LaserDashboard™ allows you to set your engraving and cutting processes, separate your job by colors, and assign vector lines quickly and easily. Layout your graphic on-screen and print the file to the laser.



Boost job organization by sending your file to the Epilog Job Manager. From one easy-to-use software application, you can access any job you have ever sent to the laser, view the settings you used on any past job, re-run projects, and access your material database.

## Maintenance

The non-contact process of laser engraving keeps maintenance to a minimum. You'll have free access to our technical support team for the life of the laser system. The system's modular design allows you to easily replace parts, and you can follow along to videos on our free online training site.

## Safety

We only design class 2 laser systems that are completely safe for you and your team to use every day without worry. Systems are enclosed in interlocked cabinets that turn off the laser as soon as the door is open. Our systems are safe enough for a child to use in a school environment or for your employee after a long day on the job.

# ZING SERIES



## ZING16

Small-size, entry-level laser system that is perfect for starting a business or to operate out of your home, office or school.

- 30 or 40 watt CO<sub>2</sub> laser
- 16" x 12" x 4.5" (406 x 305 x 114 mm) work area
- Affordable pricing for the entry-level user



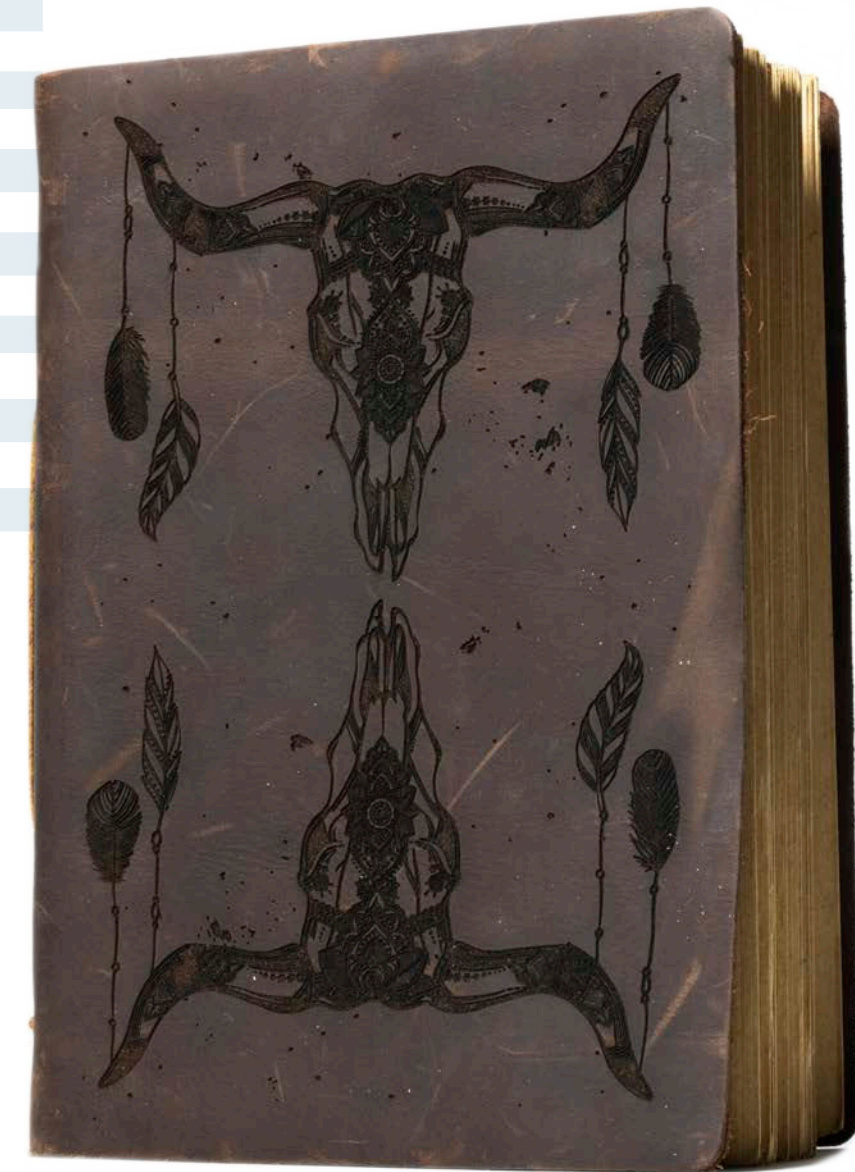
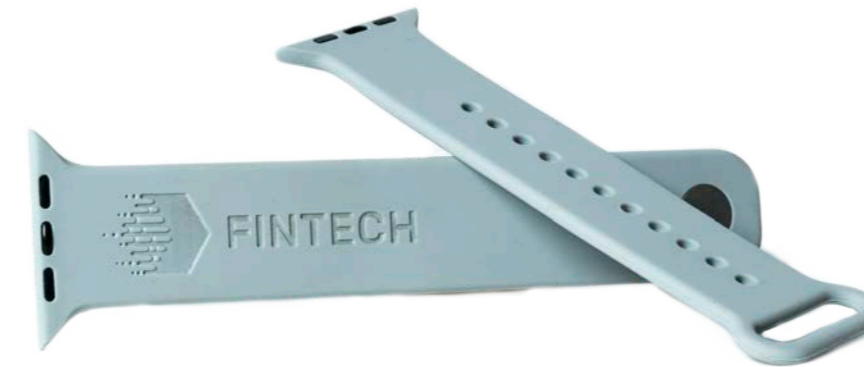
## ZING 24

Larger work area and more features make this laser an affordable choice for those needing more features than an entry-level machine.

- 30, 40, 50 or 60 watt CO<sub>2</sub> laser
- 24" x 12" x 7.75" (610 x 305 x 197 mm) work area
- Compatible with the Rotary Attachment
- Radiance™ Beam-Enhancing Optics for a smaller laser spot size across the table

## System Features

	Zing 16	Zing 24
Made-in-the-USA Quality: Designed, engineered & built in Golden, CO	•	•
Epilog Job Manager: Management & workflow software - easily organize, edit, save & print	•	•
Laser Dashboard™: Our print driver to choose from many engraving features	•	•
CO <sub>2</sub> Waveguide Laser Tubes: Long-lasting, metal tubes for the best engraving quality	•	•
Lenses Rated to 500 Watts: Highest-quality lenses provide long life & higher resolutions	•	•
High-Speed Stepper Motors: Faster stepper motors that provide high-resolution engraving	•	•
3D & Stamp Engraving Settings: Etch & cut stamps or create 3D curves on engraving	•	•
Super-Silent™ Cooling Fans: Quiet operation suitable for office environments	•	•
Air Assist: Remove heat & combustible gases from the cutting surface	•	•
Raster/Vector Color Mapping: Change your speed & power by using color settings	•	•
Networking Choices: USB & Ethernet connections, or connect wirelessly with a router	•	•
Moveable Home Position: Engrave odd-shaped items easily by setting a new home position	•	•
Red Dot Pointer: Provides a visible laser beam to help position projects	•	•
Easy-Access Drop-Down Door: Front access door for the laser system		•
Radiance™ Beam-Enhancing Optics: Higher-resolution optics for detailed engraving		•
Rotary Attachment Compatibility: Engrave cylindrical objects with the optional rotary		•



# LEGEND SERIES



## MINI 18 & 24

Looking for a system with faster engraving times than the Starter Series, but that still offers a small work area? The Epilog Mini 18 and 24 Lasers are an ideal way to move into our Legend Series.

- 30 or 40 watt CO<sub>2</sub> laser - Mini 18
- 30, 40, 50 or 60 watt CO<sub>2</sub> laser - Mini 24
- 18" x 12" x 4" (457 x 305 x 102 mm) work area - Mini 18
- 24" x 12" x 5.5" (610 x 305 x 140 mm) work area - Mini 24
- High-speed servo motors and linear encoder driven
- Automatic focusing
- 75-1200 dpi

## HELIX

For engravers looking to work with larger pieces or products, the Epilog Helix is an ideal choice. Radiance™ Beam-Enhancing Optics for a smaller laser spot size across the table.

- 30, 40, 50, 60 or 75 watt CO<sub>2</sub> laser
- 24" x 18" x 8.5" (610 x 457 x 216 mm) work area
- Easy-Access Drop-Down Door
- Wheeled Storage Stand

## FIBERMARK 24

Our small-format fiber laser system, the FiberMark 24, allows you to etch directly into metal and mark many plastics. The FiberMark 24 is our original fiber laser system and is the first flying-optic fiber lasersystem ever developed.

- 30 or 50 watt fiber laser
- 24" x 12" x 5.5" (610 x 305 x 140 mm) work area
- Easy-Access Drop-Down Door
- Ability to create etched, annealed, & polished marks
- 75-1200 dpi

## System Features

	Mini 18	Mini 24	Helix	FiberMark
Made-in-the-USA Quality: Designed, engineered & built in Golden, CO	•	•	•	•
Epilog Job Manager: Management & workflow software - easily organize, edit, save & print	•	•	•	•
Laser Dashboard™: Our print driver to choose from many engraving features	•	•	•	•
CO <sub>2</sub> Waveguide Laser Tubes: Long-lasting, metal tubes for the best engraving quality	•	•	•	
Fiber Laser Source: Etches directly into bare metal & marks plastics				•
Auto Focus: Automatically focus the table to the correct focal distance	•	•	•	
Integrated Cutting Table: Lifts the piece being cut to reduce back-side burning	•	•	•	
Moveable Home Position: Engrave odd-shaped items easily by setting a new home position	•	•	•	•
Red Dot Pointer: Provides a visible laser beam to help position projects	•	•	•	•
Rotary Attachment Compatibility: Engrave cylindrical objects with the optional rotary	•	•	•	•
Raster/Vector Color Mapping: Change your speed & power by using color settings	•	•	•	•
Networking Choices: USB & Ethernet connections, or connect wirelessly with a router	•	•	•	•
Permanent Job Storage: Store as many as 10 jobs up to 2MB in size	•	•	•	•
Job Delete at the Laser: Delete old jobs to keep laser job queue organized	•	•	•	•
Radiance™ Beam-Enhancing Optics: Higher-resolution optics for detailed engraving		•	•	
Lenses Rated to 500 Watts: Highest-quality lenses provide long life & higher resolutions	•	•	•	
Linear Encoders: Highest-quality engraving from the most precise motion control system	•	•	•	•
High-Speed Servo Motors: Faster servo motors that provide high-resolution engraving	•	•	•	•
3D & Stamp Engraving Settings: Etch & cut stamps or create 3D curves on engraving	•	•	•	
Super-Silent™ Cooling Fans: Quiet operation suitable for office environments	•	•	•	•
Air Assist: Remove heat & combustible gases from the cutting surface for cleaner cuts	•	•	•	•
Metal Bearings: Stainless steel bearings designed to last the life of the machine	•	•	•	•
Kevlar Belts: Our precision drive belts are made from B-style Kevlar for superior longevity	•	•	•	•
Crumb Tray: Easily dispose of debris from under your Cutting Table	•	•	•	
Easy-Access Storage Stand: Wheeled, free-standing cart for easier access			•	•



# FUSION PRO SERIES



## FUSION PRO 32

- Available in CO<sub>2</sub>, fiber, or dual-source configurations
- 50, 60, 75, or 120 watt CO<sub>2</sub> laser
- 30 or 50 watt fiber laser
- 32" x 20" (812 x 508 mm) work area
- IRIS™ 2-camera system



## FUSION PRO 48

- Available in CO<sub>2</sub>, fiber, or dual-source configurations
- 50, 60, 75, or 120 watt CO<sub>2</sub> laser
- 30 or 50 watt fiber laser
- 48" x 36" (1219 x 914 mm) work area
- IRIS™ 3-camera system

## Industry's Highest-Speed Engraving

Introducing the fastest laser engraving systems on the market. Performance and image quality are at the heart of the Fusion Pro line of laser systems. With a maximum speed of 165 inches/second, and featuring 5g acceleration, the Fusion Pro lasers are the fastest, most productive laser systems available. Whether you're engraving wood, plastic, coated metals or glass, the Fusion Pro allows you to produce more product in less time than any competitive system.

## System Features

	Pro 32	Pro 48
Made-in the USA Quality: Designed, engineered, & built in Golden, CO	•	•
High Speed Engraving up to 165 IPS: Highest speed engraver	•	•
5G System Acceleration: Fast acceleration to top speed	•	•
IRIS™ Camera Positioning: Overhead cameras & camera at the assembly for registration mark recognition	•	•
SAFEGUARD™ features: Keep the mechanics cleaner and dust free	•	•
Touch-screen Controls: File selection and settings changes at the laser	•	•
Air Assist & Compressor: Remove heat and combustible gases from the cutting surface	•	•
Vacuum Hold-Down Table: Exhaust under the table	•	•
Networking Choices: Built-in Ethernet, USB, and wireless connections	•	•
Permanent Job Storage (1 GB): Keep your most run jobs at the machine	•	•
Auto Focus: Focus your material by thickness and plunger	•	•
Software Suite: Dashboard and Job Manager Software Package	•	•
50, 60, 75, or 120 watt CO <sub>2</sub> , air-cooled, metal Waveguide laser tube, 10.6 micrometers	•	•
or 30 or 50 watt Fiber Laser Source, 1064 nm	•	•
or Dual Source configuration	•	•
Radiance™ Beam Enhancing Optics: Higher resolution optics for detailed engraving	•	•
Laminar Air Flow: Streamlined air flow for the most efficient smoke and vapor removal	•	•
High-Speed, Brushless DC Servo Motors: Withstands the most rigorous engraving jobs at high speeds	•	•
Red Dot Pointer: Provides a visible laser beam to help position your projects.	•	•
Job Trace: Quickly see where the job will engrave on your material	•	•
Easy Access, Drop-Down Door: Front access door for the laser system	•	•
Super-Silent™ Cooling Fans: Quiet operation suitable for office environments	•	•
3-Jaw Chuck Rotary Compatibility	•	•
Rim-style Rotary Compatibility	•	•

## IRIS™ Camera Positioning

Positioning your artwork is easier than ever with the new IRIS™ Camera Positioning feature of the Fusion Pro. Overhead cameras provide a view of your material as it is positioned on the table, allowing you to accurately place your artwork and know exactly where your laser will engrave. An additional camera at the lens assembly can be used to find registration marks on pre-printed pieces when highly accurate cutting is required from your laser system.



# TECH SPECS



Zing 16



Zing 24



Mini 18



Mini 24

Work Area	16"x12" (406x305 mm)	24"x12" (610x305mm)	18"x12" (457x305mm)	24"x12" (610x305mm)
Max Material Thickness	4.5" (114mm)	7.75" (197mm)	4" (102mm). Remove table for 6" (152mm) depth & 17.5"x10" (444x254mm) work area	5.5" (140mm). Remove table for 8" (203mm) depth & 23.5" x 11.75" (597x298mm) work area
Laser Tube Wattages	30 & 40 watt, CO <sub>2</sub> , air-cooled, metal Waveguide tube, 10.6 micrometers	30, 40, 50 & 60 watt, CO <sub>2</sub> , air-cooled, metal Waveguide tube, 10.6 micrometers	30 & 40 watt, CO <sub>2</sub> , air-cooled, metal Waveguide tube, 10.6 micrometers	30, 40, 50, & 60 watt, CO <sub>2</sub> , air-cooled, metal Waveguide tube, 10.6 micrometers
Software	Laser Dashboard™, Epilog Job Manager™			
Memory	Multiple files up to 64MB. Engrave any file size			
Modes	Optimized Raster, Vector & Combined mode			
Motion Control	High-speed micro stepper motors		High-speed, continuous-loop, DC servo motors using linear and rotary encoding technology for precise positioning	
X-Axis Bearings	Shielded roller bearing assembly on a ceramic-coated aluminum guide rail		Ground & polished stainless steel long-lasting bearing system	
Belts	Advanced B-style Kevlar belts		Advanced B-style double-wide Kevlar precision drive belts	
Resolution	User-controlled 100-1000dpi		User-controlled 75-1200dpi	
Speed & Power	Computer-controlled speed & power in 1% increments up to 100%. Color mapping feature links Speed, Power, Frequency, & Raster/Vector mode settings to any RGB color		Computer-controlled speed & power in 1% increments up to 100%. Color mapping feature links Speed, Power, Frequency, Raster/Vector mode, & Air Assist On/Off settings to any RGB color	
Print Interface	10Base-T Ethernet or USB connection. Windows XP/Vista/7/8/10 compatible			
Size (W x D x H)	28.75"x22.125"x11.75" (730x562x298mm)	38"x27.25"x15" (965x692x381mm)	27.8"x26"x13.5" (706x660x343mm)	34.5"x26"x16" (876x660x406mm)
Weight	95lbs (43kg)	140lbs (64kg)	70lbs (32kg)-100lbs (45.5kg) with stand	90lbs (41kg)-120lbs (55kg) with stand
Electrical	Auto-switching power supply 110-240volts, 50 or 60Hz, single phase			
Ventilation System	350-400CFM (595-680m <sup>3</sup> /hr) external exhaust to outside or internal filtration unit required. One output port, 4" (102mm) in diameter			
Class	Class 2 Laser Product - 1 mW CW MAXIMUM 600-700nm			



Helix



FiberMark 24



Fusion Pro 32 (CO<sub>2</sub>)



Fusion Pro 32 (Fiber)



Fusion Pro 48 (CO<sub>2</sub>)



Fusion Pro 48 (Fiber)

24" x 18" (610 x 457mm)	24"x12" (610x305mm)	32" x 20" (812 x 508mm)	48" x 36" (1219 x 914mm)	
8.5" (216mm). Remove table for 11" (279mm) depth & 23.5" x 17" (597x432mm) work area	5.0" (127mm)	12.25" (311mm)		
30, 40, 50, 60, & 75 watt, CO <sub>2</sub> , air-cooled, metal Waveguide tube, 10.6 micrometers	30 or 50 watt, Fiber, air-cooled, includes collimator. 1064 nm. Beam quality: M2 < 1.1	50, 60, 75, or 120 watt, CO <sub>2</sub> , air-cooled, metal Waveguide tube, 10.6 micrometers	30 or 50 watt, Fiber, air-cooled, includes collimator. 1064nm. Beam quality: M2 < 1.1	50, 60, 75, or 120 watt, CO <sub>2</sub> , air-cooled, metal Waveguide tube, 10.6 micrometers
Laser Dashboard™, Epilog Job Manager™				
Multiple files up to 64MB. Engrave any file size		Multiple Files up to 1GB. Engrave any file size.		
Optimized Raster, Vector & Combined mode				
High-speed, continuous-loop, DC servo motors using linear and rotary encoding technology for precise positioning		High-speed, continuous-loop, brushless DC servo motors using rotary encoding tech for precise positioning		
Ground & polished stainless steel long-lasting bearing system		Ground & polished stainless steel, Teflon-coated, self-lubricating bearings. Dual blocks on X-axis for greater rigidity		
Advanced B-style double-wide Kevlar precision drive belts		Advanced B-style Kevlar belts (x-axis) & steel cord (y-axis)		
User-controlled 75-1200dpi				
Computer-controlled speed & power in 1% increments up to 100%. Color mapping feature links Speed, Power, Frequency, Raster/Vector mode, & Air Assist On/Off settings to any RGB color		Computer-controlled in .001 increments up to 100%. Color mapping feature links Speed, Power, Frequency, Raster/Vector mode, & Air Assist On/Off settings to any RGB color		
10Base-T Ethernet or USB connection. Windows XP/Vista/7/8/10 compatible		10Base-T Ethernet, USB, or Wireless connection. Windows XP/Vista/7/8/10 compatible		
36.5"x32"x39.8" (927x813x1011mm)	34.5"x24"x16" (876x622x406mm)	54.6"x42"x34.2" (1376x1067x869mm)	70.6"x42.75"x51.3" (1794x1086x1304 mm) Pedestal removed: 34"h (863mm)	
180lbs max (82kg)	120lbs max (55kg) without stand	400 lbs (182kg)	500 lbs (227kg)	
Auto-switching power supply 110-240volts, 50 or 60Hz, single phase		240volts, 50 or 60Hz, single phase		
350-400CFM (595-680m <sup>3</sup> /hr) external exhaust to outside or internal filtration unit required. One output port, 4" (102mm) diameter		650CFM (1104m <sup>3</sup> /hr) external exhaust to outside or internal filtration unit required. One output ports, 4" (102mm) diameter	650CFM (1104m <sup>3</sup> /hr) external exhaust to outside or internal filtration unit required. Two output ports, 4" (102mm) diameter	
		Additional port for dedicated exhaust through table, 4" (102 mm)		
Class 2 Laser Product - 1 mW CW MAXIMUM 600-700nm				





AET Labs

New England Education Partner  
Contact us at 888.768.4550 or infor@aetlabs..com

888.437.4564 | sales@epiloglaser.com | 16371 Table Mountain Parkway, Golden, CO, 80403

